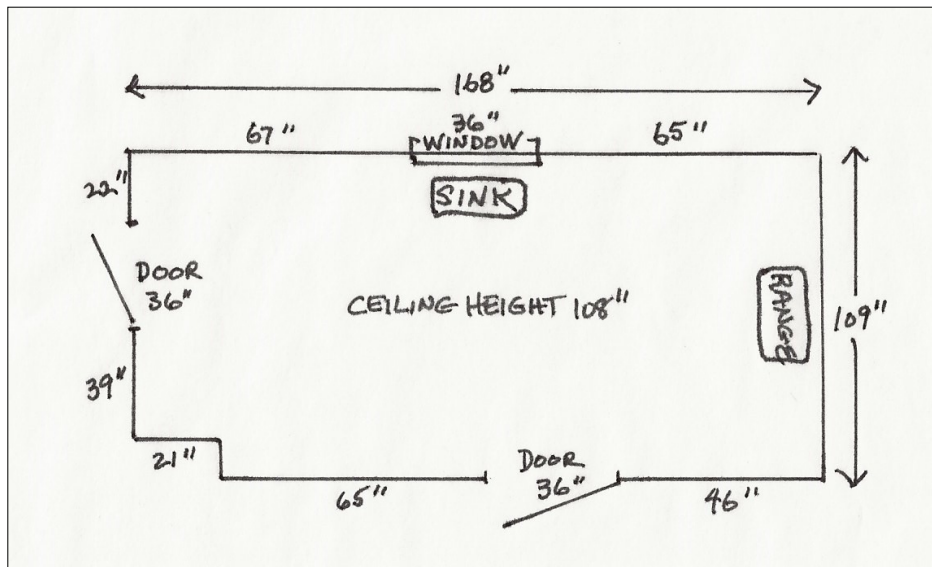


Easy Measuring Guide

For our first consultation, we'll need some basic information about your space. Please do a rough measure to bring with you. Rest assured that our designer will visit your home and professionally measure your space before finalizing the design for your beautiful new kitchen.



Step 1:

Make a rough sketch of the existing layout of your room. Don't worry about the scale, just make sure to show where the windows and doors are, and the direction in which they open.

Step 2:

Using a tape measure, measure each wall corner to corner, in inches. (not each cabinet)

Step 3:

Measure doors and windows, in inches. (outside casing to outside casing)

Step 4:

Note the location of each appliance.

Step 5:

Measure the ceiling height. Make a note if you have a beam or a soffit and be sure to measure from the floor to the bottom of it and mark it's location on the plan.

Step 6:

Mark any other permanent fixture on the plan such as a fireplace, window seat, or radiator.

In addition to your rough sketch, please bring pictures of your current space and any inspiration photos that you may have. We look forward to working with you!